

# RL1600 Weigh Module

LIGHT TO MEDIUM CAPACITY  
MOUNT ASSEMBLY



*Stainless Mount shown  
with RL75016 WHE load cell*

**INTEGRATED**  
**SCALE**  
**SYSTEMS**

[integratedscale.com](http://integratedscale.com)

# RL1600 LIGHT TO MEDIUM CAPACITY MOUNT ASSEMBLY



The RL1600 Series Weigh Module is ideally suited for a variety of applications including batching, mixing, blending, general weighing and inventory control.

Available in cast iron, mild steel, and stainless steel construction, the RL1600 series weigh modules provide accuracy, consistency, and durability in capacities ranging from 1000 lb to 75,000 lb per module.

For a complete solution, kits are available including load cells, mounting assemblies, cable, and junction box. Choose from various analog junction boxes or iQUBE®—an intelligent, non-proprietary digital diagnostic junction box. iQUBE provides simplified calibration, diagnostics, numerous connectivity solutions and enhanced electrical overload protection.

## Standard Features:

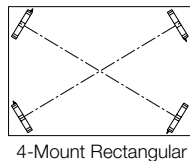
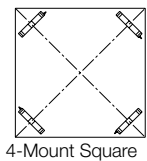
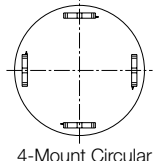
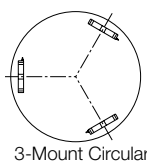
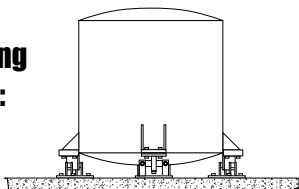
- Cast iron construction—capacities per assembly: 1000lb-25,000lb
- Mild steel and stainless steel construction—capacities per assembly: 1000lb-75,000lb
- Low-profile bolt-in-place design minimizes installation time
- Self-checking movement allows for thermal expansion/contraction and lift-off protection, eliminating external hardware



## Options:

- RL75016 tool steel or RL75016SS stainless steel environmentally-protected load cell
- RL75016 WHE stainless steel, hermetically-sealed load cells
- Vishay Sencortronics 65016 tool steel or 65016W stainless steel load cells
- iQUBE digital diagnostic junction box

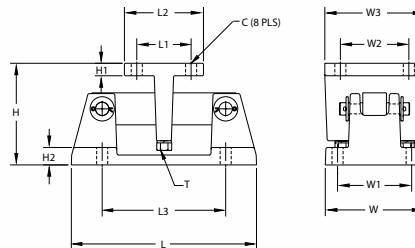
## Typical Mounting Configurations:



Vertical & Horizontal Vessel Arrangements

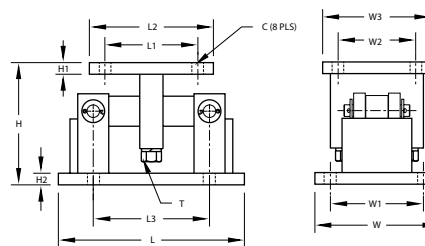
## Capacities/Dimensions:

**Cast Iron Construction—capacities per assembly:** 1000 lb, 1500 lb, 2000 lb, 2500 lb, 3000 lb, 5000 lb, 10,000 lb, 15,000 lb, 20,000 lb, 25,000 lb



**Fabricated Mild Steel Construction—capacities per assembly:** 1000 lb, 1500 lb, 2000 lb, 2500 lb, 3000 lb, 5000 lb, 10,000 lb, 15,000 lb, 20,000 lb, 25,000 lb, 50,000 lb, 75,000 lb

**Stainless Steel Construction—capacities per assembly:** 1000 lb, 1500 lb, 2000 lb, 2500 lb, 5000 lb, 10,000 lb, 15,000 lb, 20,000 lb, 25,000 lb, 50,000 lb, 75,000 lb



Dimensions Inches (mm)	1000lb-5000lb* (454 kg-2268 kg)	10,000 lb-25,000 lb (4536 kg-11,340 kg)	50,000 lb-75,000 lb† (22,680 kg-34,020 kg)
C	.56 (15.8)	.78 (19.8)	.78 (19.8)
H	5.00 (127.0)	7.89 (199.9)	9.31 (236.5)
H1	.50 (12.7)	.75 (19.1)	1.00 (25.4)
H2	.50 (12.7)	.75 (19.1)	1.00 (25.4)
L	9.25 (235.0)	12.00 (304.8)	16.25 (412.8)
L1	2.75 (69.9)	6.00 (152.4)	6.50 (165.1)
L2	4.00 (101.6)	8.00 (203.2)	9.00 (228.6)
L3	6.25 (158.8)	7.50 (190.5)	11.50 (292.1)
T	1/2-13 UNC	3/4-10 UNC	1 1/4-7 UNC
W	5.00 (127.0)	8.00 (203.2)	12.00 (304.8)
W1	3.75 (95.3)	6.00 (152.4)	9.50 (241.3)
W2	2.75 (69.9)	6.00 (152.4)	6.50 (165.1)
W3	4.00 (101.6)	8.00 (203.2)	9.00 (228.6)

\* Stainless steel load cell not available in the 3000 lb capacity.  
† Fabricated mild steel and stainless steel construction only.

Integrated Scale Systems is here for all of your laboratory and industrial needs. With 20+ years of experience under our belts, we strive to provide the best solutions tailored to your individual needs.

Give us a call.



Integrated Scale Systems  
20 Kulick Road  
Fairfield, NJ 07004 • United States  
TEL: (888) 893-1010  
FAX: (973) 808-5055

integratedscale.com